



EATON How to get OIDs list

Contents

Requirements:	1
Download the MIB.....	1
Load the MIB on Ireasoning MIB Browser.....	3
Get the OID list	5
Export the list	10
Import into Excel	12

Requirements:

Software: a MIB browser is required. For this procedure I will use iReasoning MIB Browser.

Hardware: An UPS with a network card

Download the MIB

Go to <http://powerquality.eaton.fr/Support/Software-Drivers/Downloads/connectivity-firmware.asp> and download the Mib files for your card.

(in this case I am using the Network-MS card)



Powering Business Worldwide

Register | Sign In

Customer Support

United Kingdom | Worldwide Sites | www.eaton.uk.com

Search



Powering Business Worldwide

Home > Customer Support > Software & Drivers > Download - Firmware

- Products & Services
- Solutions
- Knowledge Centre
- Customer Support
- How to Buy
- Contact Us

- ▲ Home
- ▲ Customer Support
- ▲ Software & Drivers
 - ▶ Download - Firmware

Download - Firmware

SNMP MIB (management Information Base) download

Power Xpert Gateway UPS and Mini-slot cards

- PowerMIB
- Eaton-OIDS
- Eaton-EMP-MIB
- Eaton-PXG-MIB
- RFC-1628 Standard MIB v1.00

ConnectUPS-X, -BD and -E cards

- PowerMIB
- RFC-1628 Standard MIB v1.00

Network Card-MS

- PowerMIB
- RFC-1628 Standard MIB v1.00
- UPS Pulsar MIB
- Eaton-ATS2 MIB

Power Xpert Gateway Mini-Slot card

Firmware	Instructions	Notes
pxms_2.3.7.zip (12.59MB)	Upgrade Instructions Power Xpert Gateway Card USB configuration file	Release Notes

Power Xpert Gateway X-Slot UPS card

Firmware	Instructions	Notes
pxgx_ups_2.3.6.zip (12.15MB)	Upgrade Instructions Power Xpert Gateway Card USB configuration file	Release Notes

Network Card-MS

Network Card-MS (former NMC 66102/ConnectUPS-MS)

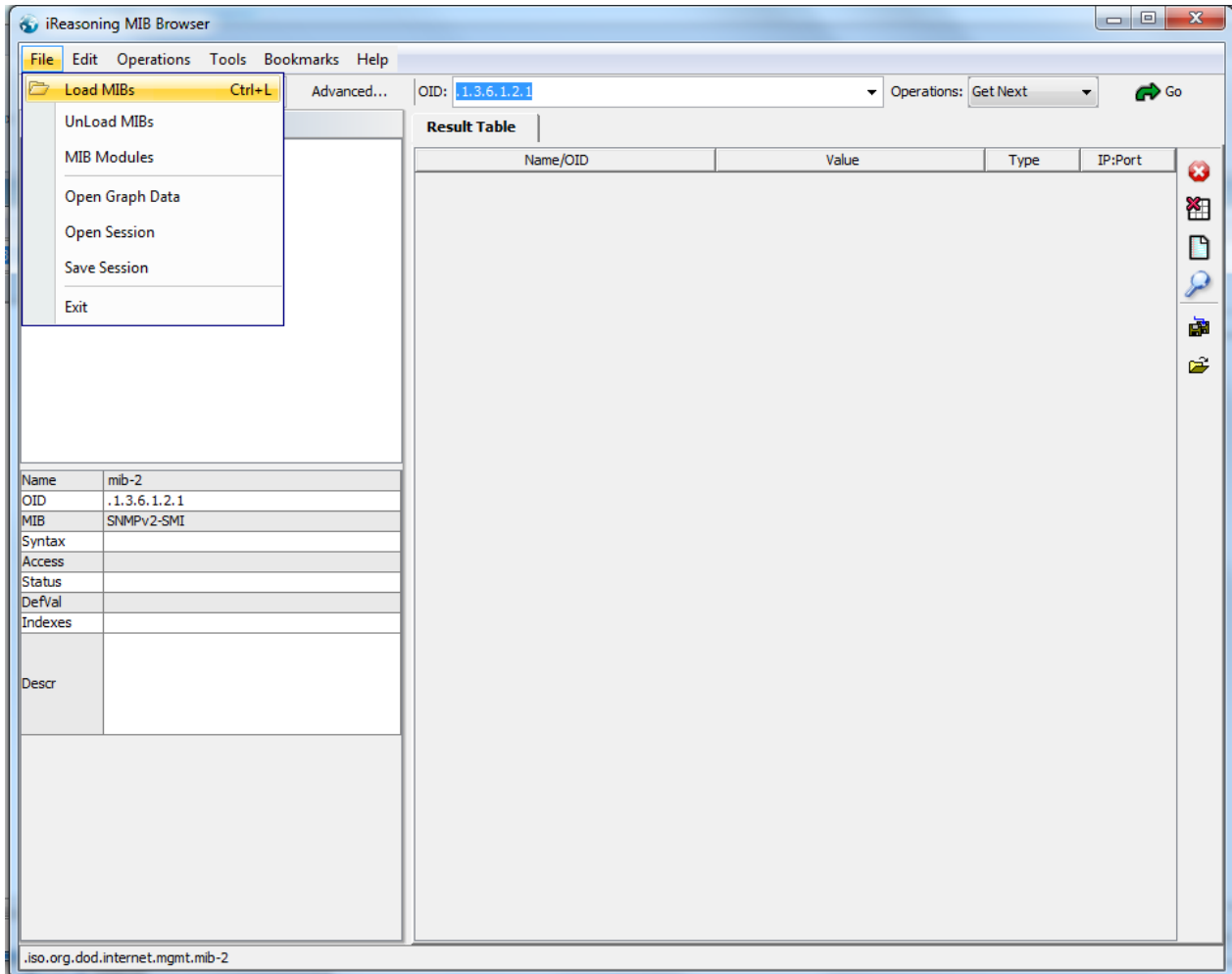
Firmware	Instructions	Notes
Multilingual - Version J1 (1.96MB)	Network Management Card-MS User Manual (pdf) english / french	Release Notes Upgrade instructions

Product List

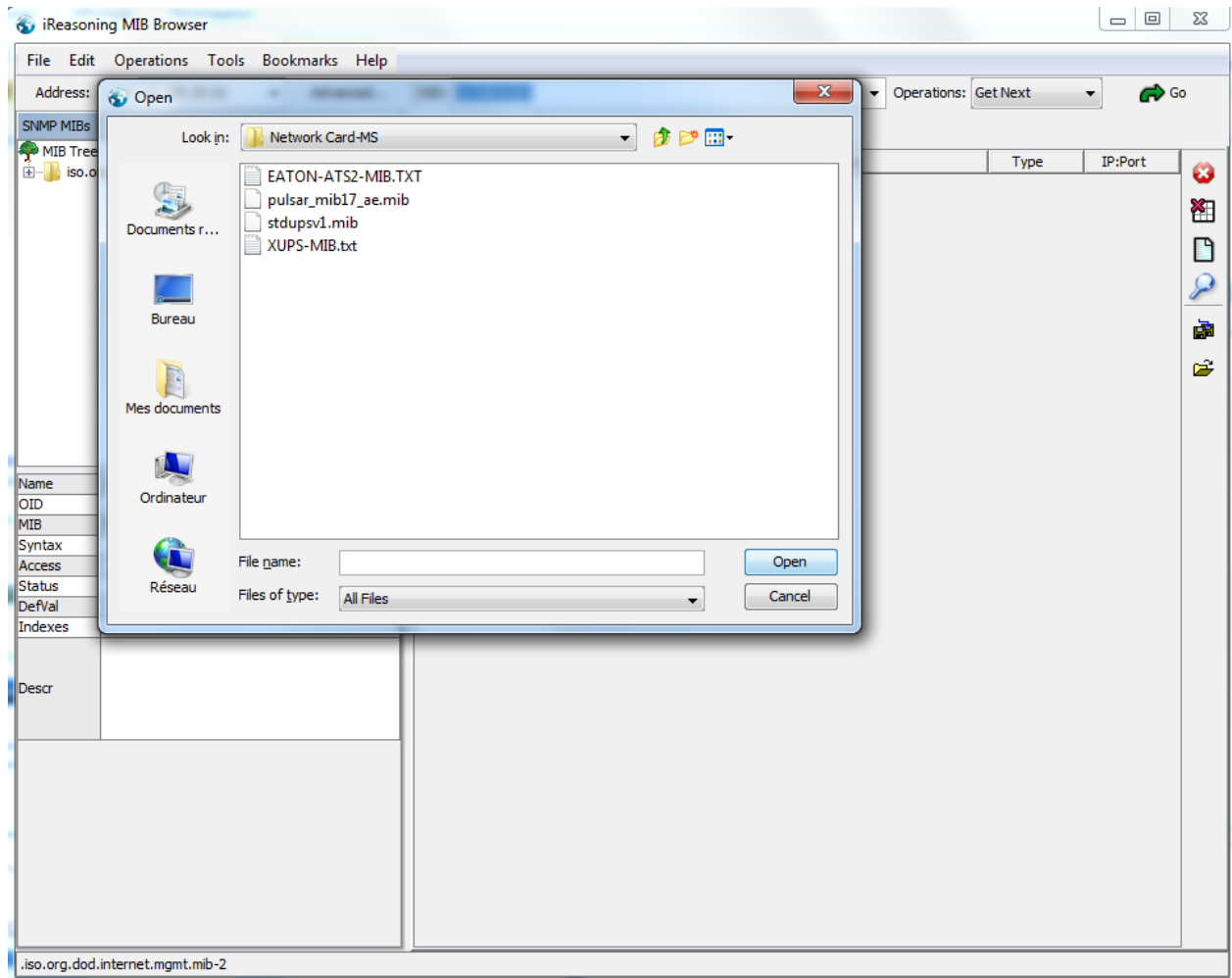
- Select a UPS
- Find a Reseller
- Register a Product
- Download Software & Drivers
- Become a Reseller

Load the MIB on Ireasoning MIB Browser

Open Ireasoning MIB Browser software and go to File and Load MIBs

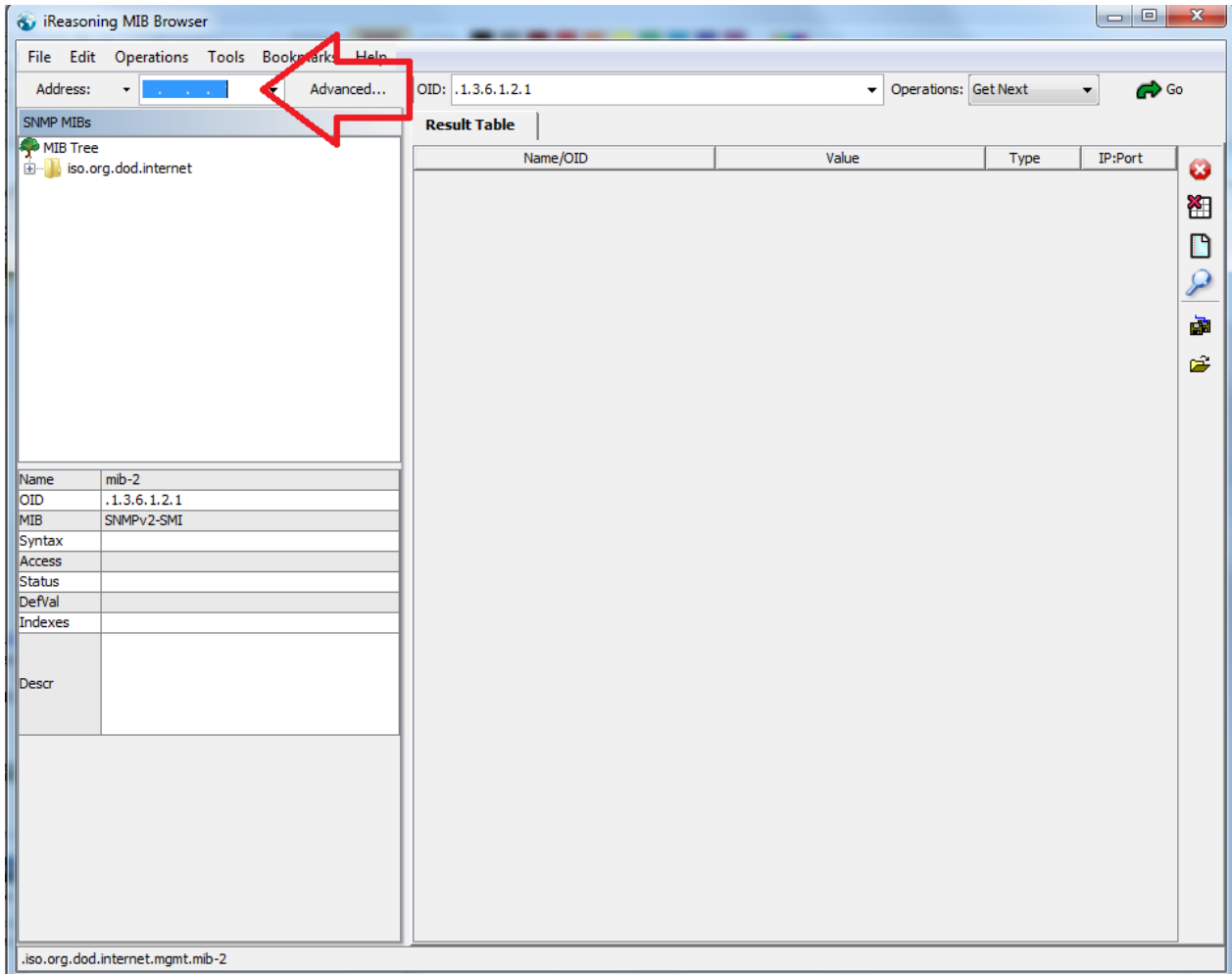


Select the MIBs files and click on Open



Get the OID list

Enter the IP address of the UPS network card





Powering Business Worldwide

Click on Advanced... and add the Read and Write Community password (public and private).

Advanced Properties of SNMP Agent

Address . . .

Port 161

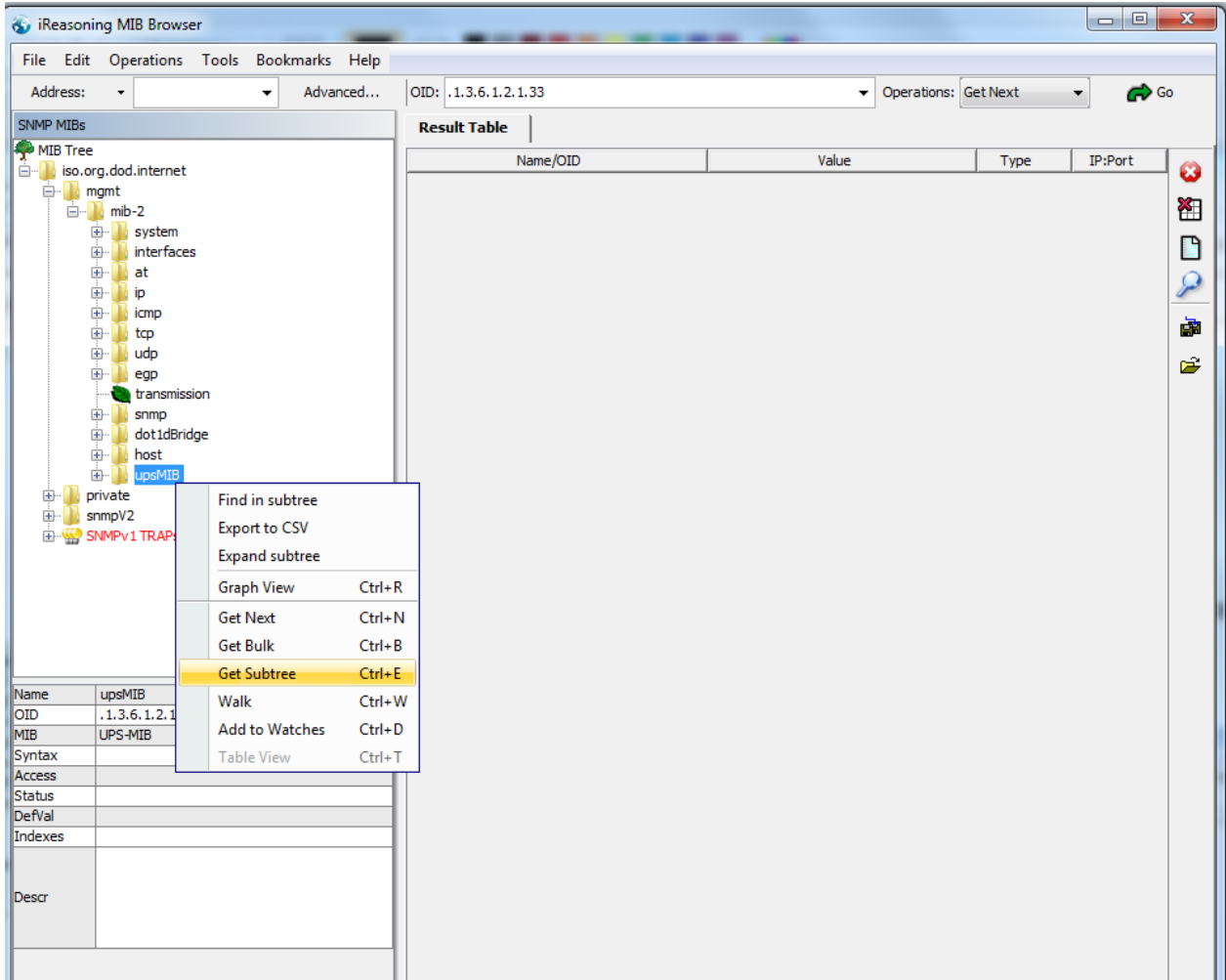
Read Community ***** public

Write Community ***** private

SNMP Version 1

Ok Cancel

Go to iso.org.dod.internet.mgmt.mib-2 and right click upsMIB. Then Get Subtree (on the right you will have the list of all the OIDs in the RFC 1628 standard MIB)



iReasoning MIB Browser

File Edit Operations Tools Bookmarks Help

Address: Advanced... OID: .1.3.6.1.2.1.33 Operations: Get Next Go

MIB Tree

- iso.org.dod.internet
 - mgmt
 - mib-2
 - system
 - interfaces
 - at
 - ip
 - icmp
 - tcp
 - udp
 - egp
 - transmission
 - snmp
 - dot1dBridge
 - host
 - upsMIB
 - private
 - snmpV2
 - SNMPv1 TRAPS

Result Table

Name/OID	Value	Type	IP:Port
upsIdentManufacturer.0	EATON	OctetString	
upsIdentModel.0	Evolution 650	OctetString	
upsIdentUPSSoftwareVersion.0	INV: 620106	OctetString	
upsIdentAgentSoftwareVersion.0	Network Management Card V6.00 JJ	OctetString	
upsIdentName.0	ID: AREM4802C , Msg: unknown	OctetString	
upsIdentAttachedDevices.0		OctetString	
upsBatteryStatus.0	batteryNormal (2)	Integer	
upsSecondsOnBattery.0	0	Integer	
upsEstimatedMinutesRemaining.0	87	Integer	
upsEstimatedChargeRemaining.0	100	Integer	
upsBatteryVoltage.0	140	Integer	
upsBatteryCurrent.0	0	Integer	
upsBatteryTemperature.0	0	Integer	
upsInputLineBads.0	1	Counter32	
upsInputNumLines.0	1	Integer	
upsInputFrequency.1	500	Integer	
upsInputVoltage.1	242	Integer	
upsInputCurrent.1	0	Integer	
upsInputTruePower.1	0	Integer	
upsOutputSource.0	normal (3)	Integer	
upsOutputFrequency.0	500	Integer	
upsOutputNumLines.0	1	Integer	
upsOutputVoltage.1	242	Integer	
upsOutputCurrent.1	0	Integer	
upsOutputPower.1	0	Integer	
upsOutputPercentLoad.1	0	Integer	
upsBypassFrequency.0	0	Integer	
upsBypassNumLines.0	0	Integer	
upsAlarmsPresent.0	0	Gauge	
upsTestResultsSummary.0	donePass (1)	Integer	
upsTestResultsDetail.0		OctetString	
upsTestStartTime.0	31 hours 24 minutes 5 seconds (11304574)	TimeTicks	
upsTestElapsedTime.0	0	Integer	
upsShutdownType.0	system (2)	Integer	
upsShutdownAfterDelay.0	-1	Integer	
upsStartupAfterDelay.0	-1	Integer	
upsRebootWithDuration.0	-1	Integer	
upsAutoRestart.0	on (1)	Integer	
upsConfigInputVoltage.0	230	Integer	
upsConfigInputFreq.0	500	Integer	
upsConfigOutputVoltage.0	230	Integer	
upsConfigOutputFreq.0	500	Integer	
upsConfigOutputVA.0	650	Integer	
upsConfigOutputPower.0	420	Integer	
upsConfigLowBattTime.0	3	Integer	
upsConfigAudibleStatus.0	enabled (2)	Integer	
upsConfigLowVoltageTransferPoint.0	160	Integer	
upsConfigHighVoltageTransferPoint.0	294	Integer	

Name	upsMIB
OID	.1.3.6.1.2.1.33
MIB	UPS-MIB
Syntax	
Access	
Status	
DefVal	
Indexes	
Descr	

.iso.org.dod.internet.mgmt.mib-2.upsMIB

Now go to private and right click enterprises, then Get Subtree (this will list the list of all OIDs in Eaton MIBs)

The screenshot shows the iReasoning MIB Browser interface. The left pane displays the MIB tree with the path `iso.org.dod.internet.private.enterprises` selected. A context menu is open over the `enterprises` node, with `Get Subtree` highlighted. The main pane shows a table of OIDs and their values.

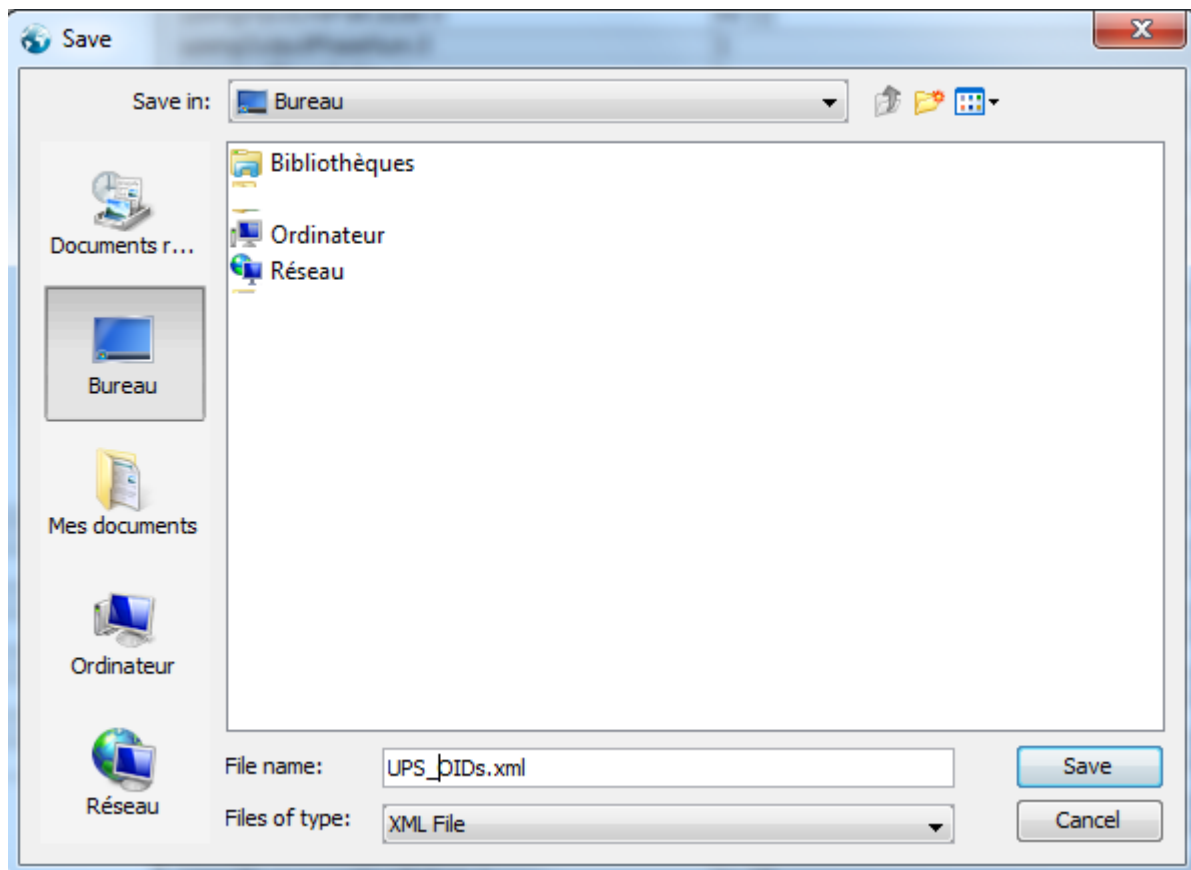
Name/OID	Value	Type	IP:Port
upsIdentManufacturer.0	EATON	OctetString	
upsIdentModel.0	Evolution 650	OctetString	
upsIdentUPSSoftwareVersion.0	INV: 620106	OctetString	
upsIdentAgentSoftwareVersion.0	Network Management Card V6.00 JJ	OctetString	
upsIdentName.0	ID: AREM4802C , Msg: unknown	OctetString	
upsIdentAttachedDevices.0		OctetString	
upsBatteryStatus.0	batteryNormal (2)	Integer	
upsSecondsOnBattery.0	0	Integer	
upsEstimatedMinutesRemaining.0	87	Integer	
upsEstimatedChargeRemaining.0	100	Integer	
upsBatteryVoltage.0	140	Integer	
upsBatteryCurrent.0	0	Integer	
upsBatteryTemperature.0	0	Integer	
upsInputLineBads.0	1	Counter32	
upsInputNumLines.0	1	Integer	
upsInputFrequency.1	500	Integer	
upsInputVoltage.1	241	Integer	
upsOutputCurrent.1	0	Integer	
upsOutputTruePower.1	0	Integer	
upsOutputSource.0	normal (3)	Integer	
upsOutputFrequency.0	500	Integer	
upsOutputNumLines.0	1	Integer	
upsOutputVoltage.1	241	Integer	
upsOutputCurrent.1	0	Integer	
upsOutputPower.1	0	Integer	
upsOutputPercentLoad.1	0	Integer	
upsAssessFrequency.0	0	Integer	
upsAssessNumLines.0	0	Integer	
upsAssessPresent.0	0	Gauge	
upsAssessResultsSummary.0	donePass (1)	Integer	
upsAssessResultsDetail.0		OctetString	
upsTestStartTime.0	31 hours 26 minutes 56 seconds (11321645)	TimeTicks	
upsTestElapsedTime.0	0	Integer	
upsShutdownType.0	system (2)	Integer	
upsShutdownAfterDelay.0	-1	Integer	
upsStartupAfterDelay.0	-1	Integer	
upsRebootWithDuration.0	-1	Integer	
upsAutoRestart.0	on (1)	Integer	
upsConfigInputVoltage.0	230	Integer	
upsConfigInputFreq.0	500	Integer	
upsConfigOutputVoltage.0	230	Integer	
upsConfigOutputFreq.0	500	Integer	
upsConfigOutputVA.0	650	Integer	
upsConfigOutputPower.0	420	Integer	
upsConfigLowBatTime.0	3	Integer	
upsConfigAudibleStatus.0	enabled (2)	Integer	
upsConfigLowVoltageTransferPoint.0	160	Integer	
upsConfigHighVoltageTransferPoint.0	294	Integer	

Export the list

Once you have the list of all OIDs available in your UPS, just click on Save the result table

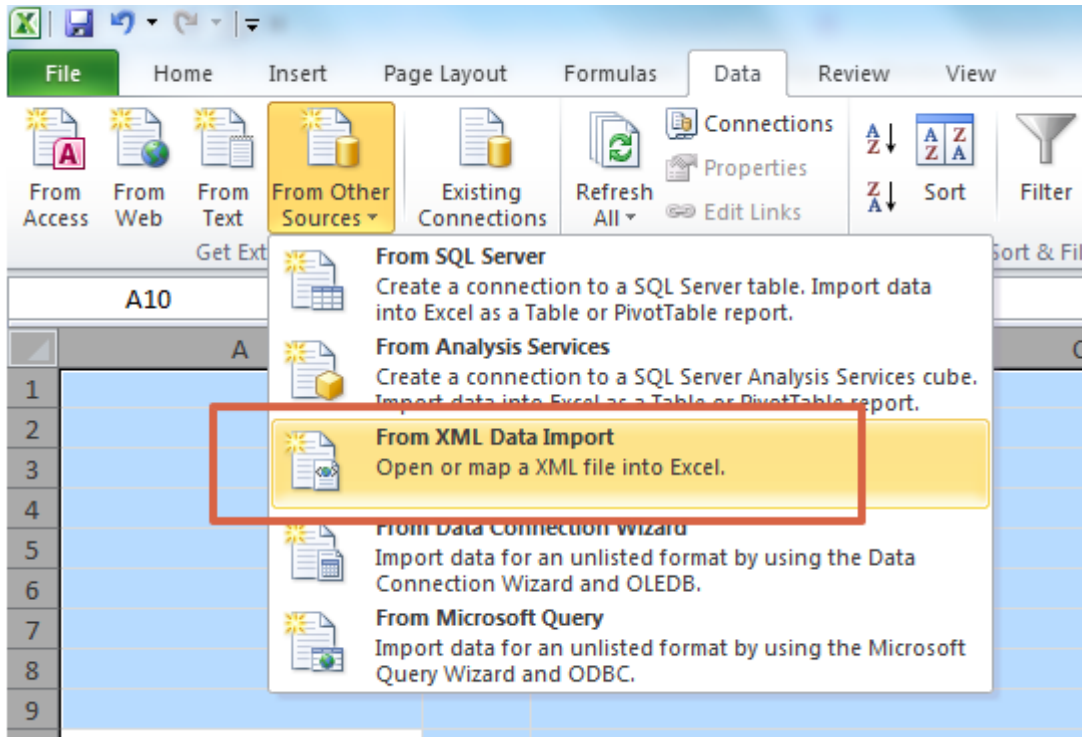
The screenshot shows the iReasoning MIB Browser interface. On the left is the MIB Tree, and on the right is the Result Table. A red arrow points to the 'Save Result Table' button in the bottom right corner of the Result Table area.

Name/OID	Value	Type	IP:Port
upsmgBatteryFaultBattery.0	no (2)	Integer	
upsmgBatteryReplacement.0	no (2)	Integer	
upsmgBatteryLowBattery.0	no (2)	Integer	
upsmgBatteryChargerFault.0	no (2)	Integer	
upsmgBatteryLowCondition.0	no (2)	Integer	
upsmgInputPhaseNum.0	1	Integer	
mginputVoltage.1.0	2410	Integer	
mginputFrequency.1.0	500	Integer	
upsmgInputBadStatus.0	no (2)	Integer	
upsmgInputLineFailCause.0	no (1)	Integer	
upsmgOutputPhaseNum.0	1	Integer	
mgoutputPhaseIndex.1	1	Integer	
mgoutputPhaseIndex.2	2	Integer	
mgoutputPhaseIndex.3	3	Integer	
mgoutputVoltage.1	2410	Integer	
mgoutputVoltage.2	2410	Integer	
mgoutputVoltage.3	2410	Integer	
mgoutputFrequency.1	500	Integer	
mgoutputFrequency.2	500	Integer	
mgoutputFrequency.3	500	Integer	
mgoutputLoadPerPhase.1	0	Integer	
mgoutputLoadPerPhase.2	0	Integer	
mgoutputLoadPerPhase.3	0	Integer	
mgoutputCurrent.1	0	Integer	
mgoutputCurrent.2	0	Integer	
mgoutputCurrent.3	0	Integer	
upsmgOutputOnBattery.0	no (2)	Integer	
upsmgOutputOnByPass.0	no (2)	Integer	
upsmgOutputUtilityOff.0	no (2)	Integer	
upsmgOutputInverterOff.0	yes (1)	Integer	
upsmgOutputOverLoad.0	no (2)	Integer	
upsmgOutputOverTemp.0	no (2)	Integer	
upsmgEnvironAmbientTemp.0	242	Integer	
upsmgEnvironAmbientHumidity.0	461	Integer	
upsmgEnvironmentNum.0	1	Integer	
upsmgEnvironmentIndex.1	1	Integer	
upsmgEnvironmentComFailure.1	no (2)	Integer	
upsmgEnvironmentTemperature.1	242	Integer	
upsmgEnvironmentTemperatureLow.1	no (2)	Integer	
upsmgEnvironmentTemperatureHigh.1	no (2)	Integer	
upsmgEnvironmentHumidity.1	461	Integer	
upsmgEnvironmentHumidityLow.1	no (2)	Integer	
upsmgEnvironmentHumidityHigh.1	no (2)	Integer	
upsmgEnvironmentInput1State.1	open (2)	Integer	
upsmgEnvironmentInput2State.1	open (2)	Integer	
upsmgAgentIpAddress.0	10.130.35.92	IpAddress	
upsmgAgentSubnetMask.0	255.255.252.0	IpAddress	
upsmgAgentDefGateway.0	10.130.32.1	IpAddress	
upsmgAgentType.0	deviceEth (1)	Integer	
upsmgAgentMibVersion.0	170	Integer	
upsmgAgentFirmwareVersion.0	JJ	OctetString	
upsmgAgentCommUPS.0	1	Integer	



Import into Excel

Open Microsoft Excel and go to Data/ From other sources and select From XML Data Import





Powering Business Worldwide

Select your file and just import the XML file generated with iReasoning MIB Browser

	A	B	C	D
1	name	oid	valueType	Value
2	upsIdentManufacturer.0	.1.3.6.1.2.1.33.1.1.1.0	OctetString	EATON
3	upsIdentModel.0	.1.3.6.1.2.1.33.1.1.2.0	OctetString	Evolution 650
4	upsIdentUPSSoftwareVersion.0	.1.3.6.1.2.1.33.1.1.3.0	OctetString	INV: 620106
5	upsIdentAgentSoftwareVersion.0	.1.3.6.1.2.1.33.1.1.4.0	OctetString	Network Management Card V6.00 JJ
6	upsIdentName.0	.1.3.6.1.2.1.33.1.1.5.0	OctetString	ID: AREM4802C , Msg: unknown
7	upsIdentAttachedDevices.0	.1.3.6.1.2.1.33.1.1.6.0	OctetString	
8	upsBatteryStatus.0	.1.3.6.1.2.1.33.1.2.1.0	Integer	batteryNormal (2)
9	upsSecondsOnBattery.0	.1.3.6.1.2.1.33.1.2.2.0	Integer	0
10	upsEstimatedMinutesRemaining.0	.1.3.6.1.2.1.33.1.2.3.0	Integer	87
11	upsEstimatedChargeRemaining.0	.1.3.6.1.2.1.33.1.2.4.0	Integer	100
12	upsBatteryVoltage.0	.1.3.6.1.2.1.33.1.2.5.0	Integer	140
13	upsBatteryCurrent.0	.1.3.6.1.2.1.33.1.2.6.0	Integer	0
14	upsBatteryTemperature.0	.1.3.6.1.2.1.33.1.2.7.0	Integer	0
15	upsInputLineBads.0	.1.3.6.1.2.1.33.1.3.1.0	Counter32	1
16	upsInputNumLines.0	.1.3.6.1.2.1.33.1.3.2.0	Integer	1
17	upsInputFrequency.1	.1.3.6.1.2.1.33.1.3.3.1.2.1	Integer	500
18	upsInputVoltage.1	.1.3.6.1.2.1.33.1.3.3.1.3.1	Integer	241
19	upsInputCurrent.1	.1.3.6.1.2.1.33.1.3.3.1.4.1	Integer	0
20	upsInputTruePower.1	.1.3.6.1.2.1.33.1.3.3.1.5.1	Integer	0
21	upsOutputSource.0	.1.3.6.1.2.1.33.1.4.1.0	Integer	normal (3)
22	upsOutputFrequency.0	.1.3.6.1.2.1.33.1.4.2.0	Integer	500
23	upsOutputNumLines.0	.1.3.6.1.2.1.33.1.4.3.0	Integer	1
24	upsOutputVoltage.1	.1.3.6.1.2.1.33.1.4.4.1.2.1	Integer	241
25	upsOutputCurrent.1	.1.3.6.1.2.1.33.1.4.4.1.3.1	Integer	1
26	upsOutputPower.1	.1.3.6.1.2.1.33.1.4.4.1.4.1	Integer	0
27	upsOutputPercentLoad.1	.1.3.6.1.2.1.33.1.4.4.1.5.1	Integer	0
28	upsBypassFrequency.0	.1.3.6.1.2.1.33.1.5.1.0	Integer	0
29	upsBypassNumLines.0	.1.3.6.1.2.1.33.1.5.2.0	Integer	0
30	upsAlarmsPresent.0	.1.3.6.1.2.1.33.1.6.1.0	Gauge	0
31	upsTestResultsSummary.0	.1.3.6.1.2.1.33.1.7.3.0	Integer	donePass (1)
32	upsTestResultsDetail.0	.1.3.6.1.2.1.33.1.7.4.0	OctetString	
33	upsTestStartTime.0	.1.3.6.1.2.1.33.1.7.5.0	TimeTicks	31 hours 29 minutes (11334034)

End of the procedure.